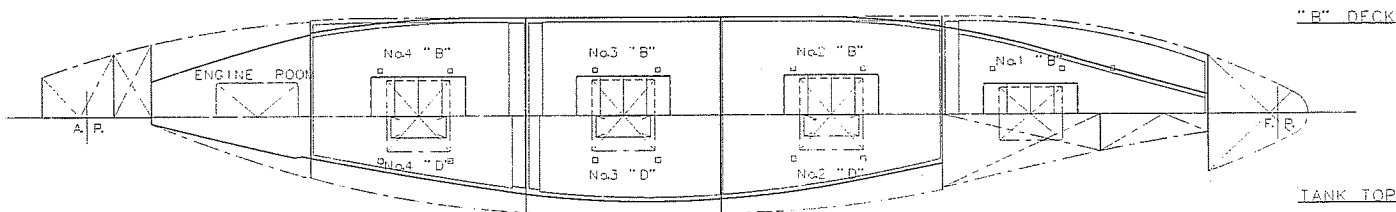
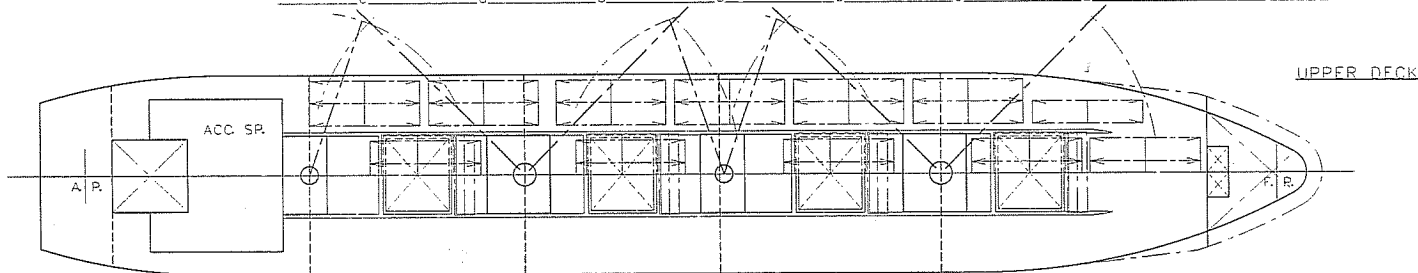
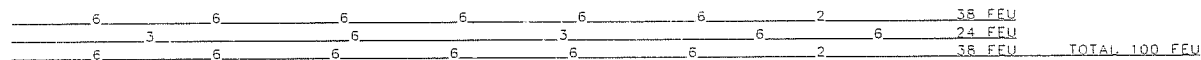
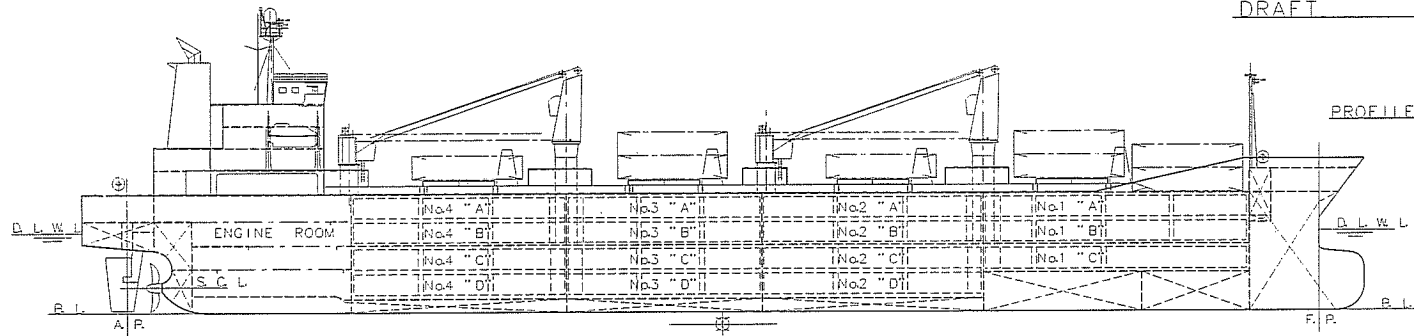


550,000 C. FT. TYPE REF. CARGO CARRIER

PRINCIPAL PARTICULARS

| | |
|------------------|----------|
| LENGTH (O. A.) | 14,300 M |
| LENGTH (P. P.) | 13,300 M |
| BREADTH (M.L.D.) | 22.70 M |
| DEPTH (M.L.D.) | 13.40 M |
| DRAFT (DESIGNED) | 8.80 M |



LADY ROSE

SHIP'S PARTICULARS

Ship's Name : M.V. "STAR TRUST"
 Owner : GRACE OCEAN PVT. LTD.
 Builder : Shikoku Dockyard Co., Ltd. Takamatsu, Japan (Hull No.S1043)
 Keel Laid : November 14, 2008
 Launched : January 27, 2009
 Delivered : April 16, 2009
 Nationality : Singapore
 Port of Registry : Singapore
 Registration Number : 396959
 Call Sign : 9V9353
 IMO Number : 9438511
 MMSI Number : 566049000
 Type of Ship : Reefer Vessel
 Plying Limit : Ocean Going
 Class : NK, NS* (Eq CV), MNS*, RMC*, CA *Designed for Carriage of Containers),MO

PRINCIPAL DIMENSION

| | |
|----------------------------------|----------|
| Length Overall | 162.50 M |
| Length between Perpendiculars | 150.00 M |
| Breadth (mld) | 26.00 M |
| Depth (mld) | 14.10 M |
| Draft designed (mld) | 9.05 M |
| Draft scantling (mld) | 9.70 M |
| Draft on summer freeboard (ext.) | 9.72 M |

DEADWEIGHT AND DRAFT

| | DRAFT | DEADWEIGHT | TPC |
|-------------|----------|------------|-----------|
| Tropical FW | 10.089 M | 13,859 M/T | |
| Fresh water | 9.887 M | 13,197 M/T | |
| Tropical | 9.922 M | 13,859 M/T | |
| Summer | 9.720 M | 13,189 M/T | 32.81 M/T |
| Winter | 9.518 M | 12,532 M/t | 32.21 M/T |

| TONNAGE | GROSS TONNAGE | NET TONNAGE |
|---------------|---------------|---------------|
| International | 14,030.00 M/T | 6,724.00 M/T |
| Suez Canal | 14,856.62 M/T | 12,285.75 M/T |
| Panama Canal | 14,030.00 M/T | 6,724.00 M/T |

LIGHTSHIP PARTICULARS:

| | |
|--|-------------|
| Lightship | 8,615.3 M/t |
| Longitudinal center of gravity (aft of amidship) | 9.36 M |
| Vertical center of gravity (above base line) | 9.85 M |

MAIN ENGINE: Mitsui Man-B&W 7S60MC-C X 1 set
 Out put M C R: 15,820 KW X 105 RPM
 C S R: 14,240 KW X 101.4 RPM

HORSEPOWER: 15,820 KW

MASTER NAME: CAPT. JAIME O. BANQUERIGO
NUMBER OF CREW: 21 OFFICERS AND CREW INCLUDING MASTER

SHIP'S PARTICULARS

| | | | |
|------------------------|---|-------------------------------------|--|
| SHIP'S NAME | M.V. STAR STANDARD | | |
| OWNER | GRACE OCEAN PVT. LTD. | | |
| OWNER'S ADDRESS | 79 ROBINSON ROAD # 11-07 CPF BUILDING SINGAPORE 068897 | | |
| OPERATOR | STAR REEFERS UK LTD | | |
| KIND OF SHIP | REFRIGERATED CARRIER | | |
| TYPE | FLASH DECKER WITH LONG FORECASTLE | | |
| PORT OF REGISTRY | SINGAPORE | | |
| OFFICIAL NUMBER | 3 9 6 9 6 0 | | |
| IMO NUMBER | 9 4 3 8 5 0 9 | | |
| MMSI | 5 6 6 0 4 1 0 0 0 | | |
| CLASSIFICATION NUMBER | 0 9 0 9 2 0 | | |
| HULL NUMBER | S-1042 | | |
| CALL SIGN | 9 V 9 3 5 4 | | |
| CLASSIFICATION | NK; NS* (EQUIPPED FOR CARRIAGE OF VEHICLES), MNS* RMC* (-25 DEG C/32 DEG C, EQUIPPED FOR CARRIAGE OF FRUIT FOR ALL CARGO CHAMBERS) CA (EQUIPPED FOR ALL CARGO CHAMBERS FOR EIGHT (8) ZONES) (DESIGNED FOR CARRIAGE OF CONTAINERS) | | |
| MARITIME SATELLITE NO. | INM-FTEL | 765 068 126/7 | |
| | INM-F FAX | 765 081 083 | |
| | INM-C | 456 604 110 | |
| | EMAIL: | master.starstandard@amosconnect.com | |
| BUILDER | SHIKOKU DOCKYARD CO., LTD. | | |
| KEEL LAID | 03rd Sept. 2008 | | |
| DATE LAUNCHED | 14th Nov. 2008 | | |
| DATE DELIVERED | 06th Feb. 2009 | | |
| MAIN ENGINE | MITSUI-MAN B&W 7S60MC-C TWO STROKE, SINGLE ACTING DIESEL ENGINE | | |
| M.C.O. | 21,515 PS (15,820 Kw) X 105 RPM | | |
| N.C.O. | 19,366 PS (14,240 Kw) X 101.4 RPM | | |
| SERVICE SPEED | BALLASTED SPEED | : 22.6 KTS | |
| | BANANA LADEN SPEED | : 22.2 KTS AT 7.5M (MLD) DRAFT | |
| | DESIGNED LADEN COND. | : 21.2 KTS AT 9.05M (MLD) DRAFT | |

TONNAGE:

| | | |
|---------------|-----------|----------------------------|
| GROSS TONNAGE | 14,030.00 | TPC: 24.5 T/CM (BALLASTED) |
| NET TONNAGE | 6724.00 | TPC: 32.8 T/CM (LOADED) |

MEASUREMENTS:

| | | |
|----------------|-------------------------------|----------------------|
| L.O.A. | 162.5 M | LIGHTWEIGHT: 8603 MT |
| L.P.P. | 150.00 M | |
| BREADTH | 26.00 M (MLD) | |
| DEPTH | 14.10 M (MLD) | |
| MAXIMUM HEIGHT | 43.00 M From keel to top most | |

DEADWEIGHTS:

| | DRAFT | FREEBOARD | DEADWEIGHT |
|----------------------|----------|-----------|------------|
| TROPICAL FRESH WATER | 10.089 M | 4052 mm | 13,871 |
| FRESH WATER | 9.887 M | 4254 mm | 13,209 |
| TROPICAL | 9.922 M | 4219 mm | 13,871 |
| SUMMER | 9.720 M | 4421 mm | 13,201 |
| WINTER | 9.518 M | 4623 mm | 12,544 |

HOLD CAPACITY:

| HOLD NO. | SQUARE METERS | CUBIC METERS | CUBIC FEET |
|--------------|-----------------|------------------|----------------|
| 1 | 1,129.80 | 2,968.50 | 104,831 |
| 2 | 1,853.10 | 4,689.80 | 165,619 |
| 3 | 2,064.50 | 5,195.70 | 183,485 |
| 4 | 1,838.70 | 4,651.60 | 164,271 |
| TOTAL | 6,886.00 | 17,505.60 | 618,206 |



CAPT. FERDINAND G. ILDEFONSO
MASTER M.V. STAR STANDARD

SHIP'S PARTICULARS

| | | | |
|------------------------|---|------------------------------------|--|
| SHIP'S NAME | M.V. STAR SERVICE I | | |
| OWNER | GRACE OCEAN PRIVATE LIMITED | | |
| OWNER'S ADDRESS | 79 ROBINSON ROAD # 11 - 07 CPF BLDG. SINGAPORE 068897 | | |
| OPERATOR | STAR REEFERS UK LTD | | |
| KIND OF SHIP | REFRIGERATED CARRIER | | |
| TYPE | FLASH DECKER WITH LONG FORECASTLE | | |
| PORT OF REGISTRY | SINGAPORE | | |
| OFFICIAL NUMBER | 397020 | | |
| IMO NUMBER | 9438482 | | |
| MMSI | 566 028 000 | | |
| CLASSIFICATION NUMBER | 80183 | | |
| HULL NUMBER | SNO.1040 | | |
| CALL SIGN | 9 V 9 3 9 8 | | |
| PORT NUMBER | 01289 - B / 11 | | |
| CLASSIFICATION | NK; NS* (EQUIPPED FOR CARRIAGE OF VEHICLES), MNS* RMC* (-25 DEG c/32 DEG C, EQUIPPED FOR CARRIAGE OF FRUIT FOR ALL CARGO CHAMBERS) CA (EQUIPPED FOR ALL CARGO CHAMBERS FOR EIGHT (8) ZONES) (DESIGNED FOR CARRIAGE OF CONTAINERS) | | |
| MARITIME SATELLITE NO. | INM-FTEL | 765068120 / 1 | |
| | INM-F FAX | 765068122 | |
| | INM-C | 456602810/C12.STRATOSMOBILE.NET | |
| | EMAIL: | master.starservice@amosconnect.com | |
| BUILDER | SHIKOKU DOCKYARD CO., LTD. | | |
| KEEL LAID | 2nd August 2007 | | |
| DATE LAUNCHED | 17th October 2007 | | |
| DATE DELIVERED | 16th January 2008 | | |
| MAIN ENGINE | MITSUI-MAN B&W 7S60MC-C TWO STROKE, SINGLE ACTING DIESEL ENGINE | | |
| M.C.O. | 21,515 PS (15,820 Kw) X 105 RPM | | |
| N.C.O. | 19,366 PS (14,240 Kw) X 101.4 RPM | | |
| SERVICE SPEED | BALLASTED SPEED : 23.2 KTS BANANA LADEN SPEED : 22.8 KTS AT 7.5M (MLD) DRAFT DESIGNED LADEN COND : 21.8 KTS AT 9.05M (MLD) DRAFT | | |

TONNAGE:

| | | |
|---------------|-----------|-----------------------------|
| GROSS TONNAGE | 14,030.00 | TPC: 24.5 T/CM (BALLASTED) |
| NET TONNAGE | 6724.00 | TPC: 32.6 T/CM (LOADED) |

MEASUREMENTS:

| | | |
|----------------|-------------------------------|----------------------|
| L.O.A. | 162.5 M | |
| L.P.P. | 150.00 M | LIGHTWEIGHT: 8595 MT |
| BREADTH | 26.00 M (MLD) | |
| DEPTH | 14.10 M (MLD) | |
| MAXIMUM HEIGHT | 43.00 M From keel to top most | |

DEADWEIGHTS:

| | DRAFT | FREEBOARD | DEADWEIGHT |
|----------------------|----------|-----------|------------|
| TROPICAL FRESH WATER | 10.089 M | 4052 mm | 13,877 |
| FRESH WATER | 9.887 M | 4254 mm | 13,215 |
| TROPICAL | 9.922 M | 4219 mm | 13,877 |
| SUMMER | 9.720 M | 4421 mm | 13,207 |
| WINTER | 9.518 M | 4623 mm | 12,550 |

HOLD CAPACITY:

| HOLD NO. | SQUARE METERS | CUBIC METERS | CUBIC FEET |
|--------------|-----------------|------------------|----------------|
| 1 | 1,129.90 | 2,968.90 | 104,846 |
| 2 | 1,851.70 | 4,686.50 | 165,502 |
| 3 | 2,067.10 | 5,202.20 | 183,714 |
| 4 | 1,836.60 | 4,646.90 | 164,103 |
| TOTAL | 6,885.30 | 17,504.50 | 618,165 |


CAPT. EDGAR D. DIEMS

MASTER - MV " STAR SERVICE "

SHIP'S PARTICULARS

| | | | |
|------------------------|---|--|----------------|
| SHIP'S NAME | M.V. " STAR FIRST " | | |
| OWNER | GRACE OCEAN PRIVATE LIMITED | | |
| OWNER'S ADDRESS | 79 ROBINSON ROAD # 11-07 CPF Building Singapore 068897 | | |
| OPERATOR | STAR REEFERS UK LTD | | |
| KIND OF SHIP | REFRIGERATED CARRIER | | |
| TYPE | FLASH DECKER WITH FORECASTLE | | |
| PORT OF REGISTRY | SINGAPORE | | |
| OFFICIAL NUMBER | 396965 | <i>Date: 18 Dec. 2006</i> | |
| IMO NUMBER | 9330056 | | |
| MMSI | 371975000 | | |
| CLASSIFICATION NUMBER | 6407 | | |
| HULL NUMBER | SNO.1030 | | |
| CALL SIGN | 9V9359 | | |
| CLASSIFICATION | NK; NS* (EQUIPPED FOR CARRIAGE OF VEHICLES), MNS* RMC* (-25 DEG C/32 DEG C, EQUIPPED FOR CARRIAGE OF FRUIT FOR ALL CARGO CHAMBERS) CA (EQUIPPED FOR ALL CARGO CHAMBERS FOR EIGHT (8) ZONES) (DESIGNED FOR CARRIAGE OF CONTAINERS) | | |
| MARITIME SATELLITE NO. | INM-F TEL | 765081091/2 | |
| | INM-F FAX | 765081093 | |
| | INM-C | 456605810 | |
| | EMAIL: | master.starfirst@amosconnect.com | |
| BUILDER | SHIKOKU DOCKYARD CO., LTD. | | |
| KEEL LAID | 1ST OCT 2005 | | |
| DATE LAUNCHED | 20TH DEC 2005 | | |
| DATE DELIVERED | 31ST MAR 2006 | | |
| MAIN ENGINE | MITSUI-MAN B&W 7S60MC-C TWO STROKE, SINGLE ACTING DIESEL ENGINE | | |
| M.C.O. | 21,515 PS (15,820 Kw) X 105 RPM | | |
| N.C.O. | 19,366 PS (14,240 Kw) X 101.4 RPM | | |
| SERVICE SPEED | BALLASTED SPEED | : 23.0 KTS AT 6.0M (MLD) DRAFT | |
| | BANANA LADEN SPEED | : 22.5 KTS AT 7.5M (MLD) DRAFT | |
| | DESIGNED LADEN COND | : 21.5 KTS AT 9.05M (MLD) DRAFT | |
| TONNAGE: | | | |
| GROSS TONNAGE | 14,030.00 | | |
| NET TONNAGE | 6724.00 | | |
| MEASUREMENTS: | | | |
| L.O.A. | 162.5 M | | |
| L.P.P. | 150.00 M | | |
| BREADTH | 26.00 M (MLD) | | |
| DEPTH | 14.10 M (MLD) | | |
| MAXIMUM HEIGHT | 43.00 M From keel to top most | | |
| DEADWEIGHTS: | | | |
| | DRAFTS | FREEBOARD | DEADWEIGHT |
| TROPICAL FRESH WATER | 10.089 M | 4052mm | 13,882 |
| FRESH WATER | 9.887 M | 4254mm | 13,216 |
| TROPICAL | 9.922 M | 4219 mm | 13,879 |
| SUMMER | 9.72 M | 4421 mm | 13,202 |
| WINTER | 9.518 M | 4623 mm | 12,544 |
| HOLD CAPACITY: | | | |
| HOLD NO. | SQUARE METERS | CUBIC METERS | CUBIC FEET |
| 1 | 1,126.20 | 2,960.00 | 104,531 |
| 2 | 1,846.10 | 4,673.60 | 165,048 |
| 3 | 2,063.00 | 5,192.70 | 183,379 |
| 4 | 1,832.70 | 4,637.60 | 163,775 |
| TOTAL | 6,868.00 | 17,463.90 | 616,733 |


 Capt. Antonio G. Servidad
 master, m.v. STAR FIRST
 SINGAPORE